

3.0.0 Technical specifications

3.1.0 Technical specifications of the mobile mechanical ship unloader

Dimensions:

Height in transport position	:	4095	mm
Width in transport position	:	2500	mm
Length in transport position (without towing vehicle)	:	12510	mm

See also fig. 1 (annex 8.2.0)

Dimensions in unloading position : see fig. 2, 7, 8 and 9a

Total weight (as per fig. 1
without towing vehicle) : see vehicle documents

3.2.0 Technical specifications of the individual aggregates

3.2.1 Material pick-up device with vertical conveyor screw 1

Material intake screw

Diameter	:	400	mm
Length	:	1200	mm
Speed (can be switched over)			
Drive	:	Hydraulic motor	
Type	:	Danfoss OMT 315	
Nominal power	:	12	kW

Vertical conveyor screw 1

Diameter	:	400	mm
Length	:	5860	mm

Drive

Conveyor screw 1	:	Hydraulic motor	
Nominal power	:	30	kW
Power transmission	:	direct via a coupling	

Swivel drive for screw 1

Swivel drive 1	:	Hydraulic motor with planetary gear	
Nominal power	:	1.9	kW
Power transmission	:	planetary gear-box	

3.2.2 Vertical conveyor screw 2

Diameter	:	400	mm
Length	:	5900	mm
Drive			
Conveyor screw	:	Hydraulic motor	
Nominal power	:	30	kW
Power transmission	:	direct via a coupling	

3.2.3 Slewing cylinder vertical conveyor screw 2

Hydraulic cylinder – double acting		(qty 1)	
Piston diameter	:	200	mm
Cylinder stroke	:	2202	mm

3.2.4 Horizontal conveyor screw 3

Diameter	:	508	mm
Length	:	10456	mm

Drive			
Conveyor screw 3	:	Hydraulic motor	
Nominal power	:	30	kW
Power transmission	:	direct via a coupling	

3.2.5 Control cylinder horizontal conveyor screw 3

Hydraulic cylinder		(qty: 2)	
- telescopic cylinder – single acting			
Cylinder stroke	:	2110	mm
Piston diameter	:	200 / 150	mm

3.2.6 Horizontal conveyor screw 4

Diameter	:	508	mm
Length	:	7800	mm
Drive			
Conveyor screw 4	:	Hydraulic motor	
Nominal power	:	30	kW
Power transmission	:	direct via a coupling	

3.2.7 Drive unit for rotational motion (main revolving joint)

Drive unit	:	Hydraulic motor with planetary gear
Nominal power	:	1.9 kW
Power transmission	:	planetary gear box

3.2.8 Further hydraulic systems

General

Tank capacity	:	600 litres
Valve voltage	:	24 V DC
Pump drive	:	Diesel engine with power take-off gear type 4272/SAE-1

Fan for air / oil heat exchanger

Drive	:	Hydraulic motor
Speed	:	2500 rpm

3.2.9 Diesel engine

Make	:	Scania
Type	:	DC 9 48A Diesel
Power	:	240 kW
Speed	:	1800 rpm
Diesel tank	:	600 litres
Fuel	:	Diesel fuel oil

Attention: The lubricating and maintenance intervals in the appendix and in the separate operating instructions for the individual assembly groups must be followed!

3.2.10 Loading device with integrated filter

Type	:	06.3
Travel range	:	900 mm
L min	:	3400 mm above +/- 0
L max.	:	4400 mm above +/- 0

Hydraulic winch

Drive	:	Hydraulic motor
Slack rope rest	:	T4V7H 340-11

Compressed air filter

Type :	INFA-Staub AJMP 122-BKF incl. controller type ESM-946	
Number of bags :	12	
Filtering area :	12	m ²
Electrical mains supply voltage for the Solenoid valves :	24	V GS
Differential pressure :	8	mbar

Ventilator

Throughput quantity :	14	m ³ /min i. o.
Total differential pressure:	175	daPa (at 20°C)
Drive :	Hydraulic motor	

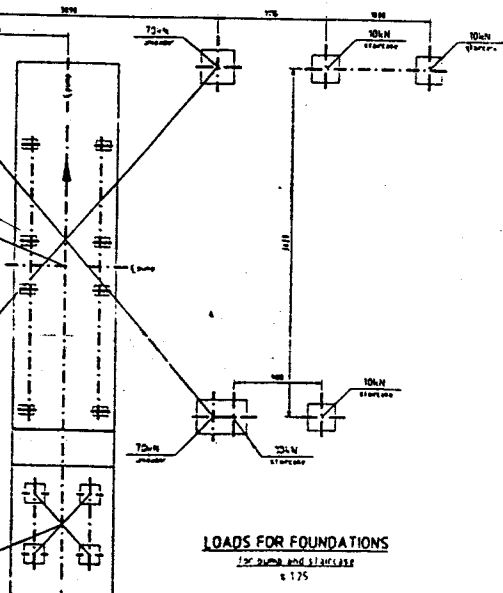
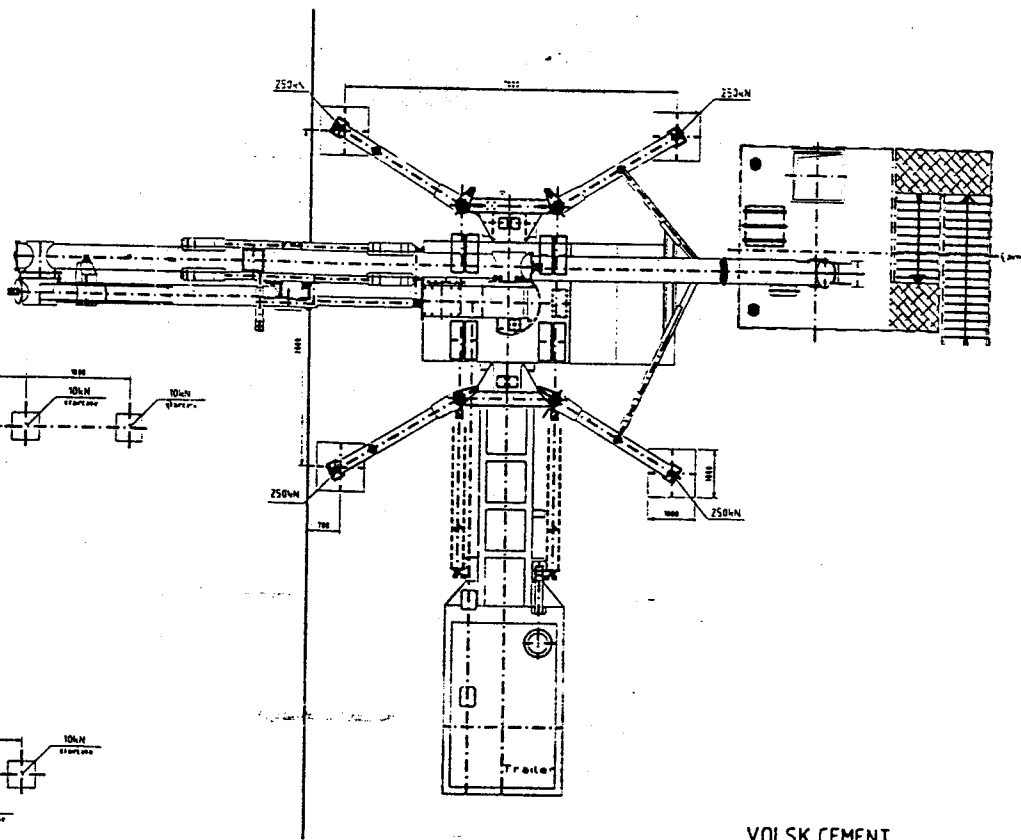
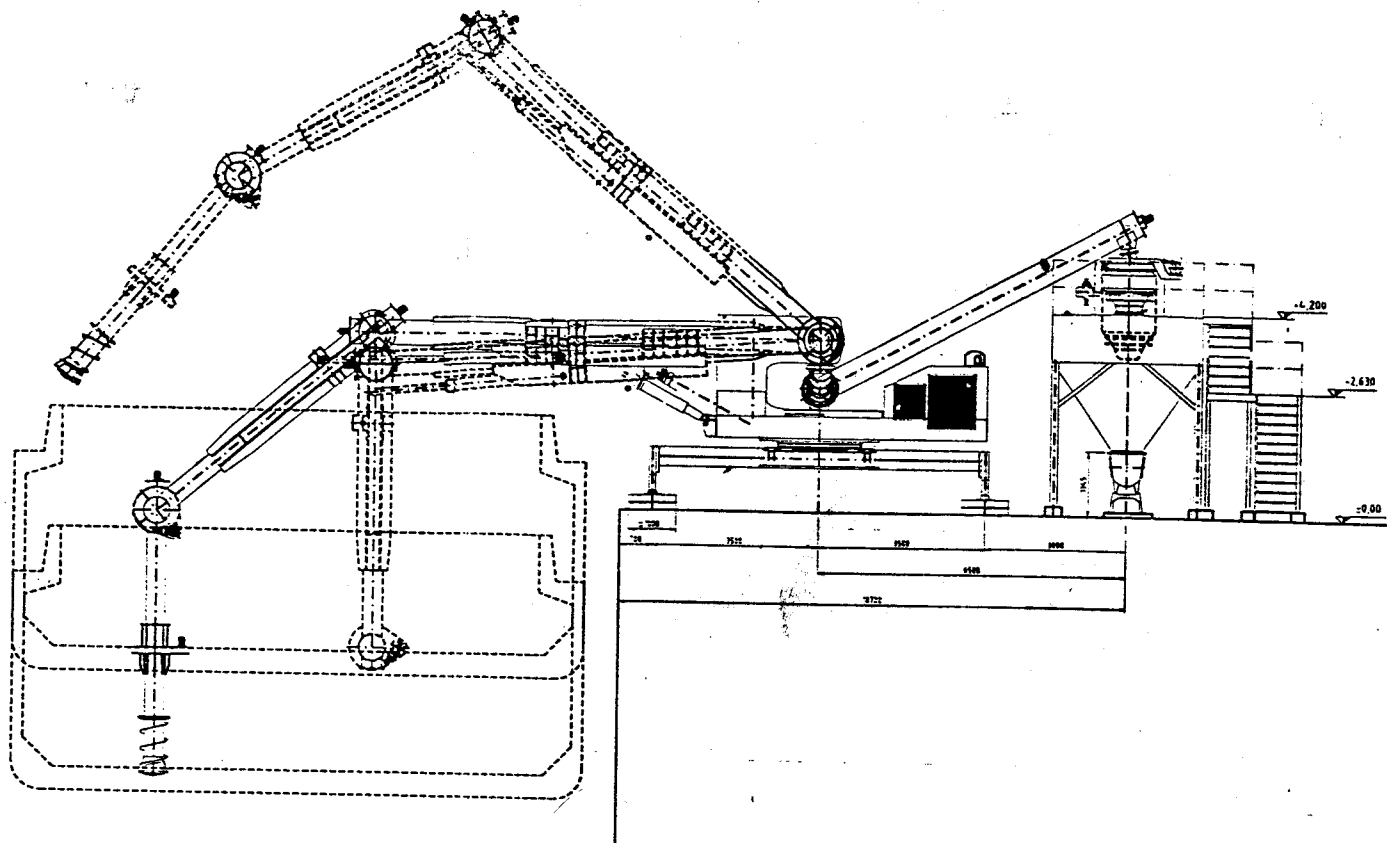
3.2.11 Trailer

Total weight :	40.66	t
Vertical load on trailer :	10	t
Permitted axle load :	3x16	t
Max. permitted speed :	60	km/h
	(Not to be exceeded due to tyre load)	
Total trailer length :	12.570	mm
Total width :	2500	mm
1 st and 2 nd axle :	rigid axle	
3 rd axle :	friction-steered axle with steering lock of max. 20°	

3.2.12 Electrical control

Battery group

Nominal voltage :	24 V DC
Nominal capacity :	225 Ah



VOLSK CEMENT

SUL 1

COM. NO.: 0.12725

1 unloader, 1 screw pump, 1 screw compressor

SHIP UNLOADER
POSITION AND DETAILS

TRAU HAMBURG

Blatt 150

0.12725.0.010

BRUNNEN