

Introduction

Dry Bulk Liners are used for a wide and constantly growing range of granular and powder products as a highly cost effective and time saving alternative to sacks and bags.

Dry Bulk Liners, form a clean, dry and protective shield between the product and the floor and walls of the container. This enables a 20', 30' and 40' bulk container to be used as a low cost alternative to a road tanker for the transport of free-flowing, bulk products. Such as dry granules, powder, grains, chemicals and other products. After discharging, the liner is simply removed and discarded, leaving the container free of residue and the danger of cross-contamination subsequent products.

SJS is the innovative and quality concerned manufacturer of Dry Bulk Container liners, SJS offers numerous styles of dry bulk liners, capable of transporting any non-hazardous good flowing dry products. Furthermore, we can also make kinds of product according to customer's requirement including detailed dimension and standard fittings of products they use.

PE Film Dry-bulk Container Liners

PE/PP Woven Dry-bulk Container liners

Applications

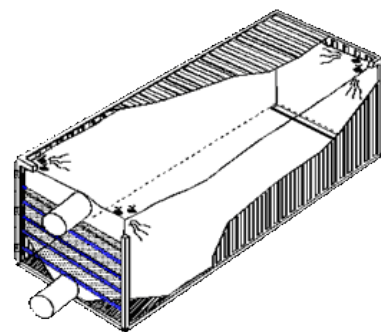
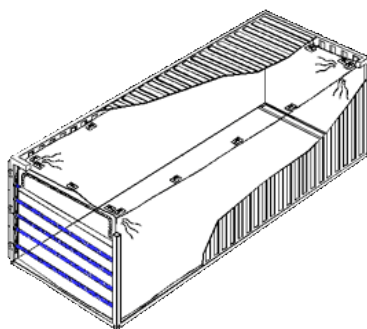
CHEMICALS

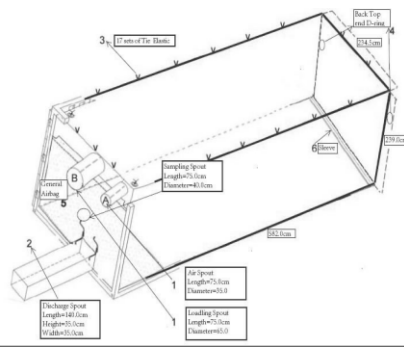
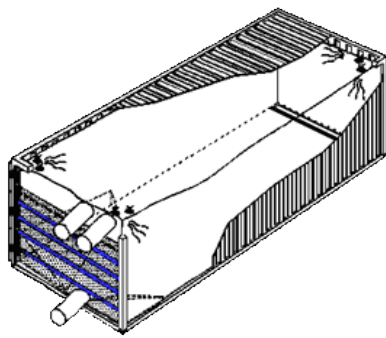
ABS Resin, ABS, Aluminium Powder, Glass Beads, Polyester Granules, Polyethylene Granules, Polycarbonate Granules, Polypropylene Granules, PVC Granules, PTA, Soda Ash, PE Resin, PP Resin, PS Resin, PVC Resin, Pigments

FOODSTUFFS

Barley, Cocoa, Coffee Beans, Corn, Flour, Lentils, Milk Powder, Mixed Grain Feed, Nuts, Peas, Rice, Seeds, Soya Beans, Sugar, Tea Leaf

Sketch





	<p>PE/PP Woven Dry Bulk liners Size: 20/30/40 Feet Feature: Diverse Load/Discharge Spout Stitched Belts to Tie on Lashing Bars With Strong Woven Bulkhead Suitable: For Cargos in Granule/Powder</p>
	<p>PE Film Dry Bulk Liners Size: 20/30/40 Feet Feature: Top Load or End Load , Diverse Load/ Discharge Spout Welded Plastic Tabs to Connect Lashing Bars Optional Strong Woven Bulkhead Suitable: For Cargos in Granule/Powder</p>

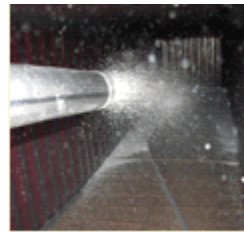
Loading/Discharging



Conveyer Loading



Hopper Loading



Pneumatic Loading



Thrower Loading



Tilt Discharging



Pumping

Bulk Container Liner Advantages

1. Cost saving on packaging material, handling cost & transportation cost.
2. Minimize cargo spillage & waste.
3. Maximize the loading percentage.
4. Protect cargo from contamination.
5. Easy & fast to install, load & dispose.

Installation

1. Thoroughly sweep out the container
2. Unfold liner completely
3. Begin hanging at front corner of container
4. Move towards rear inserting rubber bands into hanging clips
5. Attach filling spout fastening both sides of each filling hatch
6. Move towards rear attaching all filling spouts of liner
7. Insert opposite front corner rubber band into corner hanging clip
8. Move towards rear inserting rubber bands into hanging clips
9. From front, peeling back paper from double sided tape, pulling backwards and outwards
10. Ensure base liner is fitted against edges of container and is free from creases
11. Attach any remaining rubber bands on liner end
12. Insert rubber bands at ends of discharge hold up cord into side clips
13. Check that discharge is slightly clear of floor
14. Attach rubber band to hanging clip on door