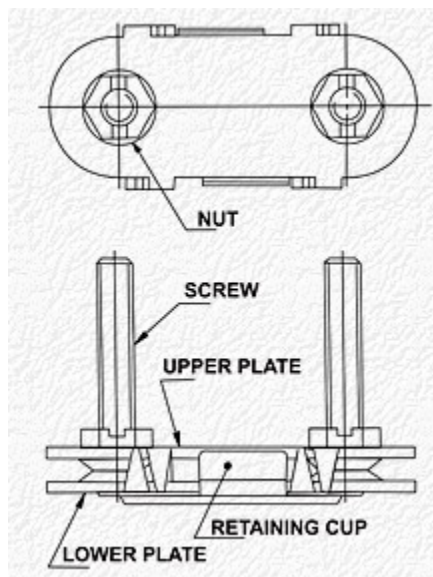


CONVEYOR BELT FASTENERS

We are manufacturers of complete range of Conveyor Belt Fasteners Plate Hawk Jackson Type for domestic and exports markets as per IS:10288:1982 for Joining rubber conveyor belts used in Minings,Cement,Steel, Thermal,Chemical plants,Qerrying,Road Constructions,Stone Crusshing,Food,Sand & Granuels etc.

We manufacture Solid Plate Conveyors Hawk Type Conveyor Belt Fasteners in following

Size:No. 1, 1.5, 2, 2.5 & 3



Technical Specifications:

Material :- The plates and retaining clip are manufactured from cold rolled carbon steel sheet or strip conforming to grade D of IS : 513-1973 ` Specification for cold rolled carbon Steel sheet (second revision) ` 01 ` Grade D of IS : 4030-1973 ` Specification for cold rolled carbon steel sheet strip for general engineering purposes .These are Zinc Plated for longer life and rust preventions.Specially formed teeth penetrates belt carcass without damaging conveyor belts fibre.

Screw and nut :- The screw and nut are manufactured from 4.6 of IS : 1367 (part 3) - 1979 "Technical supply conditions for threaded steel fasteners : Part

3 mechanical properties and test methods for bolt, screws and studs with full loadability .These are painted auto black finish for longer life.

Our Conveyor Belt Fasteners ensures maximizing conveyors uptime, conveyor safety, and belting productivity, in a way of longer life on higher tension belts with mechanical fastener ratings upto 350 KN/M (=2,000 P.I.W.)

SELECTION OF FASTENERS														
Fastener Designation	Belt Thick-ness in min	Minimum Pulley Dia In min	Number of Sets Required for Various Width In mm of Belting											
			203	254	305	406	456	508	609	762	915	1220	1524	1830
No 1	6 to 11	300	6	8	10	13	15	16	20	25	30	40	50	60
No 1.5	9.5 to 17.5	450	-	-	8	10	12	13	16	20	24	32	40	48
No 2	12.5 to 20.5	750	-	-	-	9	10	11	14	17	21	28	35	42
No.2.5	17.5 to 25.5	1050	-	-	-	-	9	10	13	16	19	26	32	39
No. 3	20.5 to 30	1250	-	-	-	-	-	10	13	16	19	26	32	39

PACKINGS:

All our Conveyor Belt Fasteners are Packed in Individual Strong Boxes and then in Export Catoons as per various szes for safe shipments and transportations.