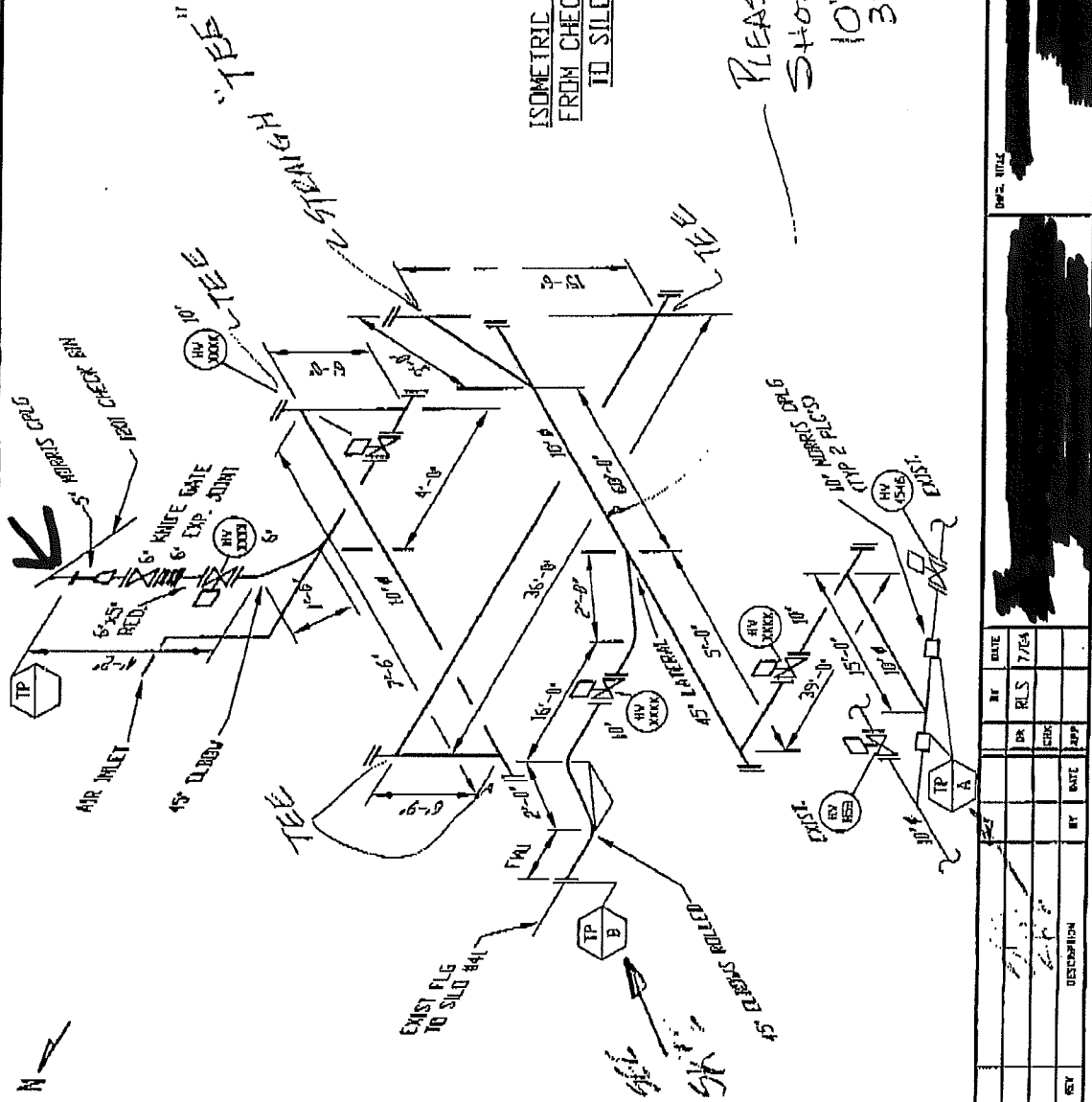


NOTES:
 1. ALL PIPING PER NEVA SPECIFICATION ISABT.
 2. REFERENCE P&ID AK-7672 AND AK-7677

NEW PIPING

ISOMETRIC OF PRODUCT LINES
 FROM CHECK BINS TO TIE-IN
 TO SILO AND FEED BIN

PLEASE DETERMINE IF PIPE
 SHOULD BE 8" SCH10S OR
 10" SCH10S TO TRANSPORT
 35-40,000⁺ LBS



PROJECT NO. 18498	PROJECT TITLE MIGU EPS PRODUCTION @ D4
PROJECT ENGINEER C. BRALZER	PLANT AREA B3
DATE [REDACTED]	SCALE 1"=10'
DATE TYPE [REDACTED]	FIG. NO. SK-18498-5
REV. A	

REV.	DESCRIPTION	BY	DATE	CHK.	DATE

SK

FROM LINEK BINS TO SILOS

① → ② → ⑩ → ⑨ → ⑧ → ⑩

ADD

EXHAUST FROM SILOS

⑬ → ⑭ → ⑮ → ⑯ → ⑰ → ⑱ → ⑲ → ⑳ → ㉑ → ㉒ → ㉓ → ㉔ → ㉕ → ㉖ → ㉗ → ㉘ → ㉙ → ㉚ → ㉛ → ㉜

ADD

① → ② → ③ → ④ → ⑤ → ⑥ → ⑦

ADD

FROM SILOS TO CHARGING STATION TO FEED BIN

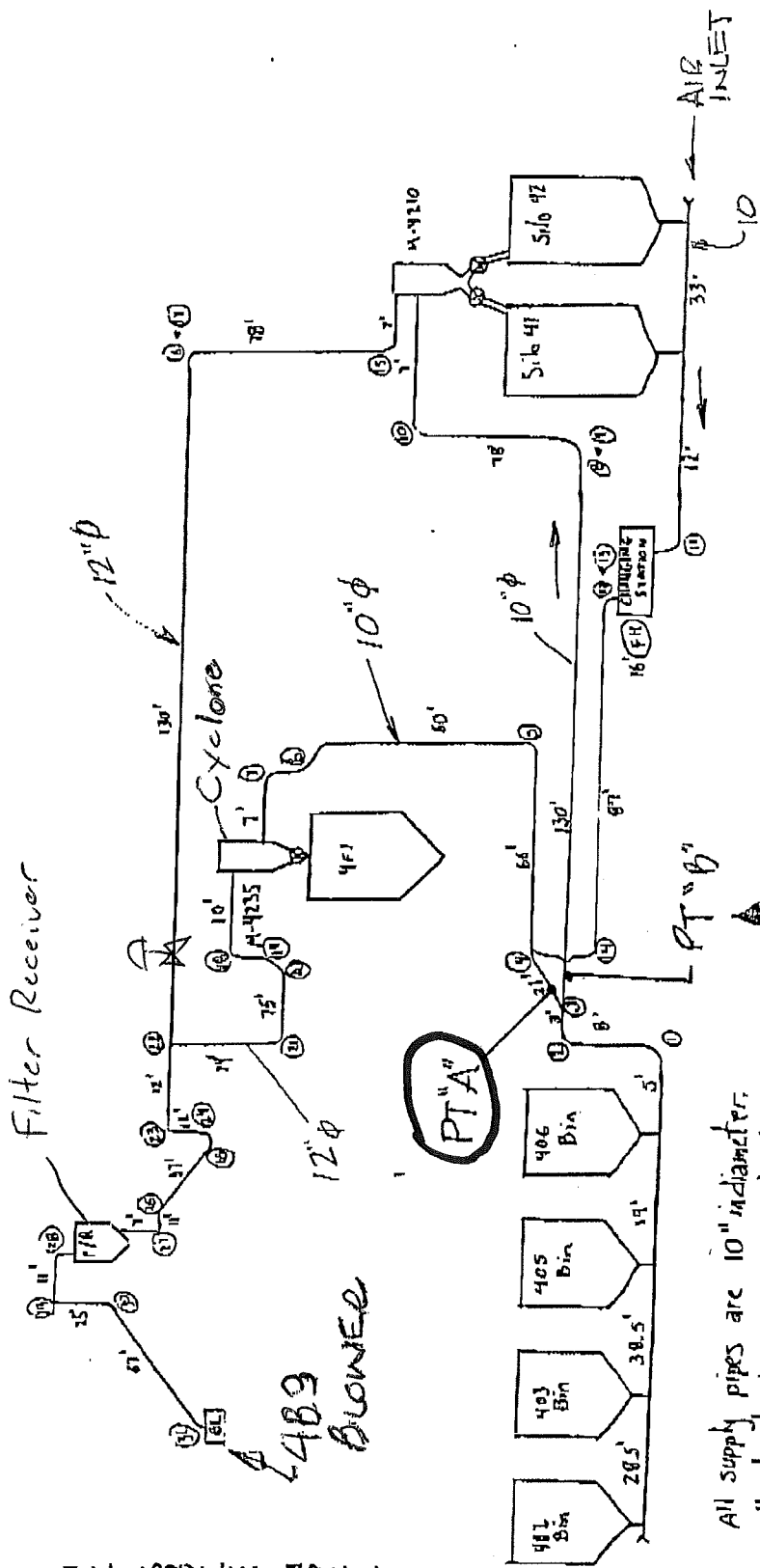
⑧ → ⑨ → ⑩ → ⑪ → ⑫ → ⑬ → ⑭ → ⑮ → ⑯

ADD

EXHAUST FROM FEED BIN

⑰ → ⑱ → ㉑ → ㉒ → ㉓ → ㉔ → ㉕ → ㉖ → ㉗ → ㉘ → ㉙ → ㉚ → ㉛ → ㉜ → ㉝ → ㉞ → ㉟ → ① → ② → ③ → ④ → ⑤ → ⑥ → ⑦ → ⑧ → ⑨ → ⑩ → ⑪ → ⑫ → ⑬ → ⑭ → ⑮ → ⑯ → ⑰ → ⑱ → ㉑ → ㉒ → ㉓ → ㉔ → ㉕ → ㉖ → ㉗ → ㉘ → ㉙ → ㉚ → ㉛ → ㉜

ADD



WORST CASE

All supply pipes are 10" in diameter.
All exhaust pipes are 12" in diameter.

By PAE MARKOWITZ

SK #2