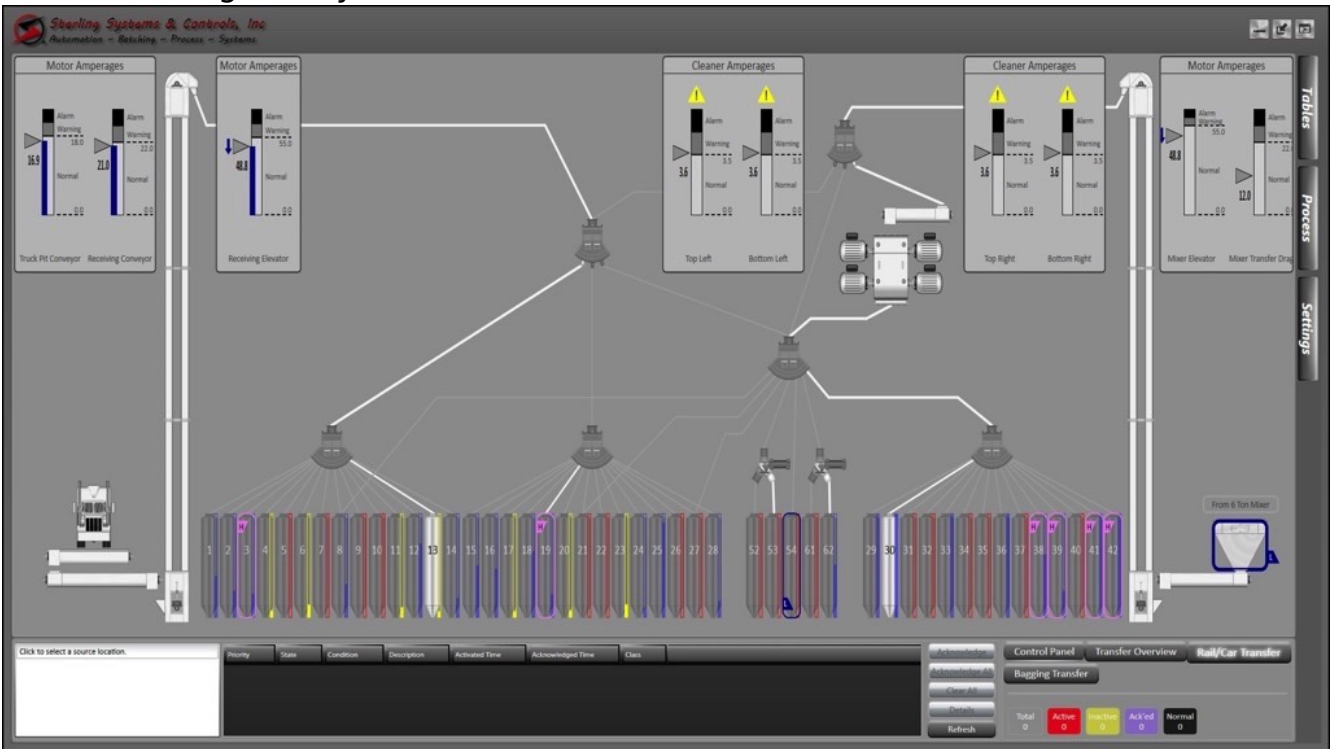


Product News

Sterling Systems & Controls: Receiving/Transfer Automation Application

Edited by on 19. Nov. 2018
 Sterling (IL), United States -

The Receiving/Transfer application is custom designed to suit the exact needs of the application. This includes allowing for manual control or to include the ability for automatic receiving and transfer steps within your facility. A fully automatic Receiving/Transfer application accurately tracks and transfers incoming material to the correct location, such as grain and other commodity materials in a Feed manufacturing facility.



Truck or Railcar transport can be accommodated. Feed rates are controlled to maximize efficiency and safety. After the material has been moved into the containment location (bin etc.) the system logs and weighs empty trucks before they leave the facility. Weight measurements, before and after material transfer, are logged into the tracking function, maintaining accuracy and traceability.

- **Fast Off-Loading of all Materials:** More efficient receiving and transfer of your incoming materials means higher throughput, more production, and lower labor costs.
- **Comprehensive Reports:** Records and information is stored in a database by vendor, truck/rail company, etc. allowing you to provide custom reports.
- **Traceability & Tracking:** Traceability, lot tracking and batch validation is enhanced. Less errors and increased efficiency means greater profitability.

More information on the Receiving/Transfer Automation Application is available from Sterling Systems & Controls. With more than 45 years of experience providing efficient solutions for plant-wide and process control and automation, process equipment, batching, micro, minor and bulk weighing, bag unloading systems, bag loading, bag dumping, Sterling Systems & Controls, Inc.' designs utilize the latest technology to provide specialized data management, raw material management, along with production data tracking.