

Anwenderbericht

motan - colortronic: Conveying and Dosing Technology at Greiner Packaging GmbH

Bearbeitet von am 23. Mai 2017

Precision in seven layers Worldwide, up to 2.5 billion cups of coffee are drunk every day. Much of this is prepared from coffee powder capsule portions in coffee machines. Due to the necessary oxygen barrier to prevent ageing of the coffee due to oxidation, these capsule portions consist of either aluminium or a plastic composite foil with an integrated oxygen barrier. Since 2015, the latter have been produced by Greiner Packaging in Kremsmünster, Austria (Fig.1). For this purpose, a sustainable production concept was developed together with the peripheral equipment manufacturer motan and the Austrian agent Luger. With this concept, the punching waste left over after punching out the deep-drawn capsule bodies is completely fed back into the 7-layer extrusion line in accordance with all quality limits.



Fig.1: Capsules made of a 7-layer composite foil are the modern way of storing coffee in portions. The film combines barrier properties and recyclability

As coffee is a natural product, like all living matter it is subject to an oxidative ageing process, in particular when exposed to the open air and moisture. In particular, the flavouring substances released during roasting of the coffee and the unsaturated fatty acids in the coffee bean oil oxidise very quickly. This is perceptible by the associated change in taste and smell. The coffee becomes sour and rancid. This applies to both whole roasted beans and ground coffee and happens very quickly. In this way, freshly ground coffee loses up to 60 per cent of its aroma after only 15 minutes. The only way to prevent this is to stop the oxidation reaction as quickly and completely as possible, namely by packaging it in air-tight and water-tight containers, such as coffee capsules. **Greiner Packaging produces coffee capsules from barrier plastic** As mentioned at the beginning, the portion containers consist either of aluminium or plastic, both

made of deep-drawn foils. However, without evaluating which is the better packaging solution, there is a significant difference between the two alternatives. Whereas an aluminium foil is a good barrier against almost all external influences, there are only very few plastics which are gas-tight and aroma-tight. EVOH, an ethylene vinyl alcohol copolymer, offers the best barrier properties against both oxygen and steam. It is just as water-tight as an LDPE layer which is 10,000 times as thick. As it is comparatively expensive, it is used centrally as a thin barrier layer within a compound foil together with other plastics. At **Greiner Packaging** in Kremsmünster, Upper Austria, a 7-layer compound foil is used to produce coffee capsules. **motan and Greiner Packaging have developed a sustainable production concept** As the cups of the coffee capsules are produced from the compound foil by deep-drawing and punching, more than 50 per cent of the film remains as a punched frame. As this quantity of waste could not have been disposed of logistically or economically due to the projected mass production, **Greiner Packaging** developed a concept for complete recycling of the punching waste during ongoing production together with the long-term system partners, the German **motan group**, a manufacturer of peripheral systems, and **Luger GmbH** from Austria, as **motan** project planners and plant fitters and the extrusion technology supplier. For this purpose, the multi-layer foil to be produced must be adapted in such a way that up to 60 per cent of it can consist of the regrind of the original foil. The punched frame and waste parts are ejected directly from the deep-drawing machine and fed into a mill (**Fig. 2**).



Fig. 2: The 7 layer barrier foil which comes out of the extrusion machine runs directly into a multi cavity deep drawing and punching machine. The remaining punched frame and any bad parts produced are then fed directly into a cutting mill (in the background at the end of the machine) and fed back into the production line from there.

The regrind goes either into a storage silo or into BigBags and is fed from there to the extrusion plant, where it is made into a mixed polymer which provides the

two main layers of the compound foil. Therefore, including the addition of new material, 70 per cent of the total material throughput of the projected conveying and dosing unit is provided by the recycling circuit. The comparatively small material throughputs of the additional four extruders represent the remaining 30 per cent. These four extruders are arranged on two levels around the central “regrind extruder”, which is on the base level. It is flanked by the extruders for the central barrier layer and the adhesion promoter layers. The extruders for the two top layers are “on the first floor”. The material traps for the extruders underneath are on the second floor **(Figs. 3 to 5)**.

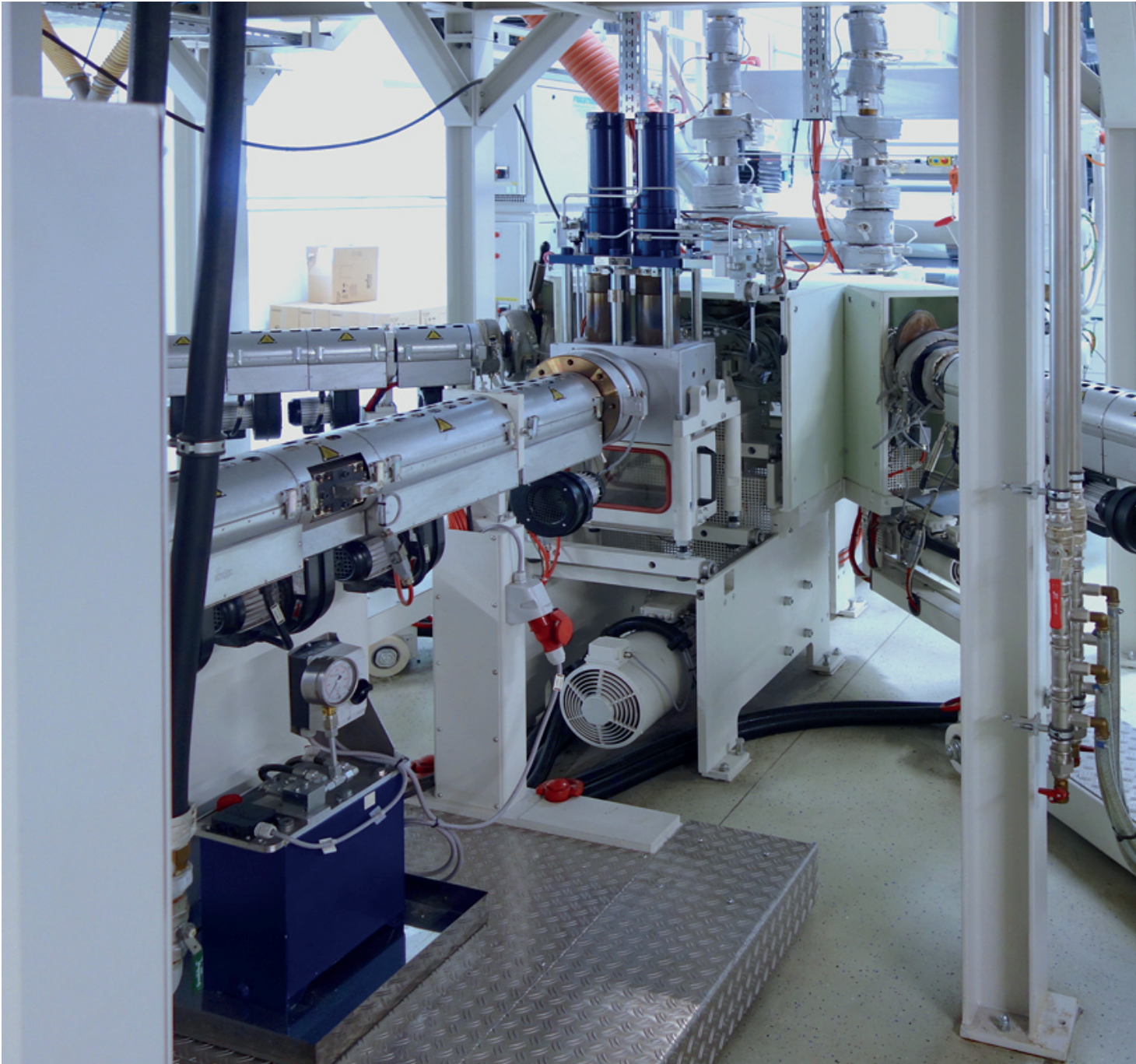


Fig. 3: A 5 aggregate extruder is used to produce the 7 layer barrier foil. The central extruder is responsible for 70

per cent of the foil in the form of the recycling percentage. It is flanked by the extruders for the barrier layer and the adhesion promoter layers. On a production level arranged above this, the extruders for the PP cover layers are arranged, which are connected to the feed block via vertical smelting lines (visible in the background).



Fig. 4: The 7 layer foil machine is constructed in three functional levels on top of each other. On the lowest level (not visible here) there are three

extruders (see Fig. 3), on level two there are two extruders for the cover layers, on the top level the dosing units to supply the extruders situated below.



Fig. 5: Central mixing station to supply the “regrind extruder”. In this, four material components come together (regrind from the silo or from the BigBag, stabiliser for the adhesion promoter and new PP material) which are added from the gravimetric dosing

units on the third level.

Compared to the complex dosing and mixing technology, the design of the pipeline system is simple and direct, with fixed piping to each material trap. There is no coupling station or intermediate material drying. **Dosing precision lies in the detail** As mentioned above, most of the material throughput is from the regrind layers, which are supplied via gravimetric dosing units and a downstream mixing system due to possible fluctuations in the bulk density. Comment by **Helmut Reckziegel**, Head of Business Unit Capsules: *“In this regard it is worth mentioning that the regrind fed back into the multi-layer foil as filler material consists of the 7-layer foil and is therefore composed of the five different viscosity materials which this contains. It was our joint objective to achieve stable mixing and flow properties for this 5-material mixture. An unstable material composition, whether due to fluctuating bulk density or a change in material proportions, leads to reductions in quality of the extrudate, in particular when seven layers have to harmonise with each other. As we wanted to install a control option for this, we provided for the addition of virgin PP material to the regrind. Therefore, the continual enrichment of the concentrations of the percentage of EVOH and of the adhesion promoter in the total foil, triggered by the return of the stamping grid, can be stabilised at 14 and 12 per cent respectively and consequently the melt flow index.” (Fig. 6)*

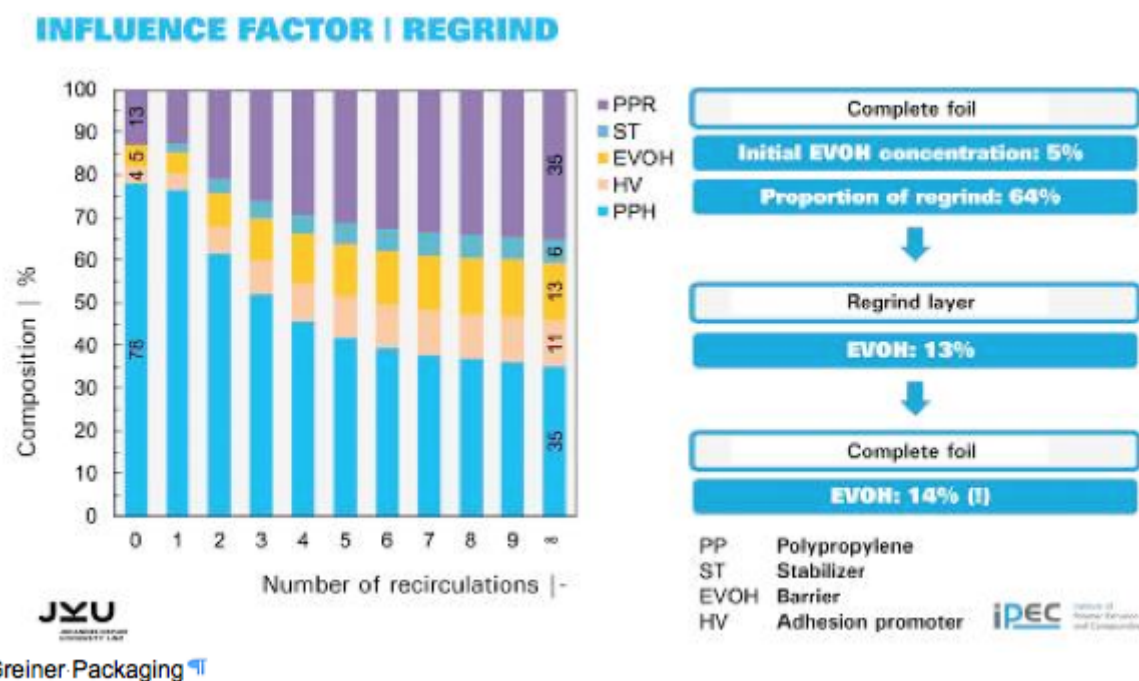


Fig. 6: Factors of influence on the composition of the regrind fed back into the cycle.

A further concept detail is worth mentioning: due to the shortest possible return of the regrind, it does not cool down completely. A large part of the heat energy contained therein can thus be used for faster melting in the extruder, which leads to an improvement in the energy balance in view of a material throughput on the "regrind extruder" of approx. 500 kg/hr. All other material percentages are added volumetrically as virgin material in constant quality. The throughput quantities for the barrier material and the adhesion promoter are a maximum of 60 kg/hr. The throughput of PP layers, which are additionally mixed with a white or brown colour master batch, is somewhat more, at approx. 110 kg/hr (**see Fig.1**).

Complete machine transparently operable via master production

computer All machine components are activated and operated via the remote-controlled electronic modules specifically developed by **motan** for this purpose. These are GRAVInet for gravimetric dosing units and VOLUnet for volumetric dosing units. They are connected to a ControlNet of the central machine control via Ethernet or TCP/IP. This can be extended up to LINKnet, a comprehensive plant management system (**Fig.7**). It is thus possible with Linknet 2.0 to collect and log the process sequences and application data and to operate all connected controls up to device level. All motan controls with communication capability can be connected. Batch tracking is therefore continuously possible.

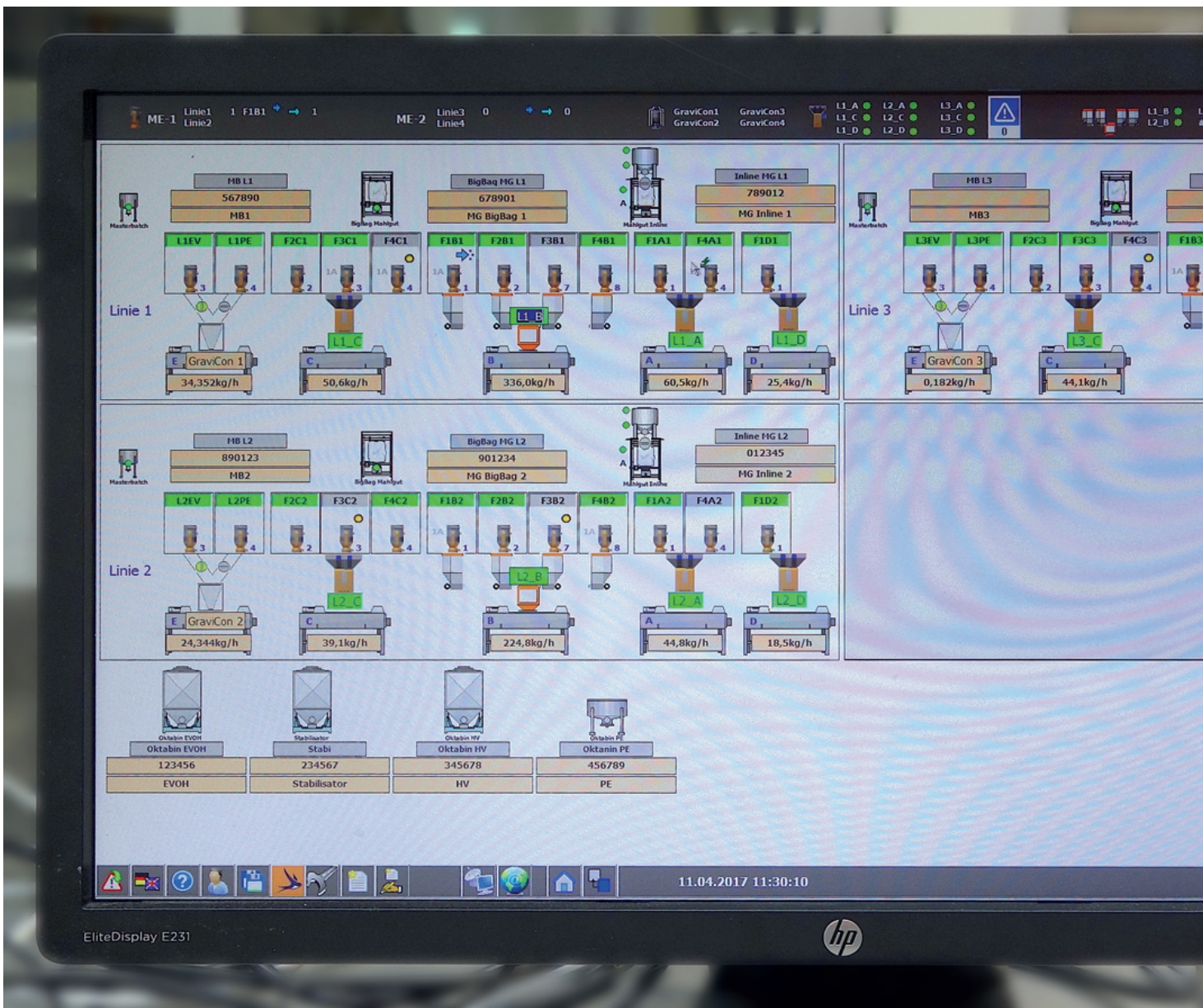


Fig. 7: All functions and setting data of the complex conveying and dosing machine are controlled by CONTROLnet, an integrated control concept for the operation, monitoring and management of all steps of raw material handling and connected to the motan master computer system via LINKnet 2.0.

Success due to many years of proven partnership Finally, in his résumé of the project process, Helmut Reckziegel sums up the main criterion for the stable production after only a short start-up phase: “In view of the introduction to a new dimension of mass production, it was important for us to keep the technical risk at a small, manageable level. It is not least for this reason, therefore, that we

decided to continue our long-standing, proven partnerships. We have been working with Luger, the systems technology partner of motan, for more than 40 years already. We knew from similar machine projects in the past that the motan-components would not call into question the availability of the complete system of 90 per cent required by us around the clock. Likewise, we assumed that the necessary dosing accuracy and the full integration of all setting and performance specifications would also be given in our “big data concept” for the logging of quality data.” **(Fig.8)**



Fig. 8: Helmut Reckziegel, Head of Business Unit Capsules at Greiner Packaging and Horst Bar, the

responsible Project Manager at Luger GesmbH look back on 40 years of co-operation with motan.

The motan-groupThe **motan group** based in Constance on Lake Constance was founded in 1947. As leading provider for sustainable raw material handling, they operate in the areas injection moulding, blow moulding, extrusion and compounding. Innovative, modular system solutions for storage, drying and crystallisation, conveying, dosing, and mixing of raw materials for the plastics manufacturing and processing industries are part of the application orientated product range. Production takes place at different production sites in Germany, India, and China. motan-colortronic distribute their products and system solutions via their regional centres. With over 500 employees currently, a yearly turnover of roughly 118 million euros is achieved. Because of their network and long-standing experience, motan can offer their customers what they really need: Individually tailored solutions with real added value. **Luger Ges.m.b.H.** **Luger Ges.m.b.H.** is a trading and assembly company founded in 1970 by Mr. Willibald Luger which sells plastic injection moulding machines, extrusion machines and peripheral devices in Austria as well as numerous eastern European countries and commissions and services them as a comprehensive project partner. The first motan conveyor was put into operation in 1974 by Luger at Greiner Packaging in Kremsmünster. Greiner was one of the first companies in Austria to automate the material handling sector. After the opening of borders in Eastern Europe, Greiner founded subsidiaries in Hungary and the Czech Republic, which were also equipped with products of motan/Luger. More international projects followed. Luger has installed conveyors and drying machines of motan in more than 15 countries to date.

